

cosmedtour.com

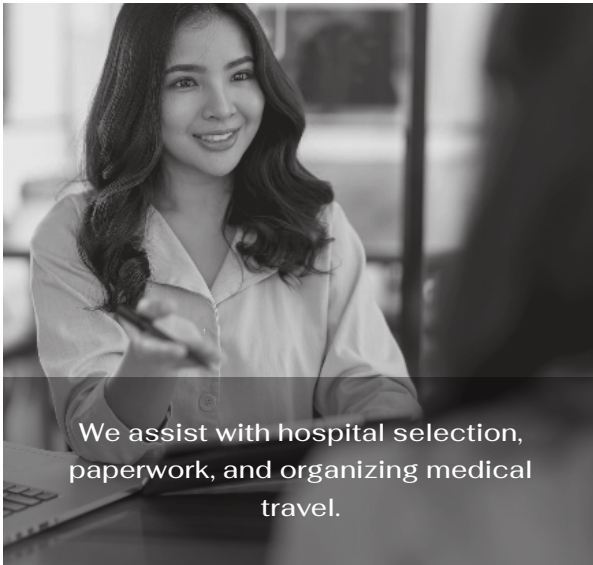


Your Ultimate Guide To
BREAST AUGMENTATION

As Thai's most trusted Plastic Surgery group,
we're passionate about client care

COSMED⁺

TOUR




We assist with hospital selection, paperwork, and organizing medical travel.



Every clinic is carefully selected. Our coordinators visit clinics to ensure that our patients are in safe hands.

Copyright (c) 2024. All Rights Reserved.
Cosmedtour Inc.



Most importantly, our goal is to ensure that you feel confident, secure, and fully supported every step of your journey.

”
Dr. Akkavich Harnnavachok

Introduction

Welcome to CosMedTour, the leading Plastic Surgery group in Thailand. Since our inception, we've been devoted to empowering countless clients to embrace their self-confidence. We take great pride in our collaboration with top-tier plastic surgeons, known for their unwavering commitment to delivering exceptional care and outstanding results. When you choose us, rest assured that you're placing yourself in the hands of true experts. Our dedicated Client Support team will guide you every step of the way—from your initial assessment, through the planning process, during your recovery, and beyond.

Our Commitment

While we're honored to be recognized as industry leaders, we're also proud pioneers. Since 2014, we've been the trailblazers in establishing relationships with fully accredited clinics and hospitals in Thailand.

Proven Track Record

Our extensive experience and unwavering dedication set us apart from the competition. We've been organizing international group medical holidays longer than anyone else, continuously listening to the needs of both prospective and former clients, and accommodating individual preferences and requests.

Building Strong Relationships

We've cultivated strong partnerships with our affiliated clinics and hospitals, hand-selecting a team of professionals known for their expertise, authenticity, and compassion. At CosMedTour, you're more than just a number—you're greeted with sincerity and a level of care that exceeds industry standards from the very beginning.

Prioritizing Patient Safety

Patient safety is non-negotiable for us. Our Founder and CEO have personally vetted and maintained international partnerships since 2014, undergoing treatments themselves and fostering direct affiliations. This demonstrates the depth of our relationships and mutual respect.

Embracing Cultural Values

In our search for like-minded partners, we found common ground with the affable and polite Thai people, renowned for their dedication and bedside manner. This cultural synergy, combined with state-of-the-art facilities for both acute and general care, makes for a perfect partnership.

Our Guarantee

At PPSI, our commitment to quality and client satisfaction extends far beyond the operating room. We believe in shouldering responsibility for our clients' well-being long after they've returned home. We provide assurances that opting for surgery overseas doesn't mean compromising on safety.

We understand that surgery inherently carries risks, and we ensure our clients are fully informed about these risks beforehand through detailed information pamphlets available at PPSI. Additionally, we encourage open discussions about these risks with their attending surgeon.

Our Commitment and Guarantee

Complication Review Process: If a complication arises, clients should promptly inform PPSI with comprehensive details and evidence. A review committee, comprising the attending plastic surgeon, PPSI Senior Plastic Surgeon, and the Medical Director of Phuket International Hospital, will assess the situation.

Determination of Responsibility: The committee will determine whether the complication is directly related to surgery or other factors, such as unrealistic expectations or pre-existing conditions. The extent of responsibility between PPSI and the client will then be allocated on a case-by-case basis.

Notification: PPSI will inform the client of the determination in writing. If the client disagrees, they can notify PPSI in writing, providing reasons for their disagreement.

High-Risk Factors

Patients with various risk factors must disclose this information to their surgeon before undergoing surgery.

Conditions

Compliance: Clients must adhere to post-operative instructions, including wearing compression garments as recommended.

Emergency Situations: In case of emergencies, clients should seek immediate medical assistance and notify PPSI promptly. Failure to do so within a reasonable time may result in the cancellation of the guarantee.

Pre-Approval: Treatment costs not pre-approved in writing by PPSI will not be reimbursed.

Evaluation Period: No determinations will be made by PPSI within six months following surgery, except in emergencies or acute complications.

Surgical Procedures: Except in emergencies, no procedures by another surgeon may be performed without PPSI's consent.

Exclusions

Certain situations are not covered by the guarantee, including non-surgical procedures, inherent risks associated with surgery, changes associated with weight gain/loss or pregnancy, and surgeries performed by non-PPSI surgeons.

Determination

Following assessment and considering the conditions and exclusions, PPSI guarantees to cover costs associated with corrective surgery, including hospital, admission, and surgical expenses, as well as return airfares and hotel accommodation for non-resident clients referred by PPSI.

Note: All corrective procedures must be completed within one year of the original surgery.

The most important thing is the responsibility from the hospital. We never abandon our customers, and we will take care of every customer to the best of our ability

”

Dr. Akkavich Harnnavachok

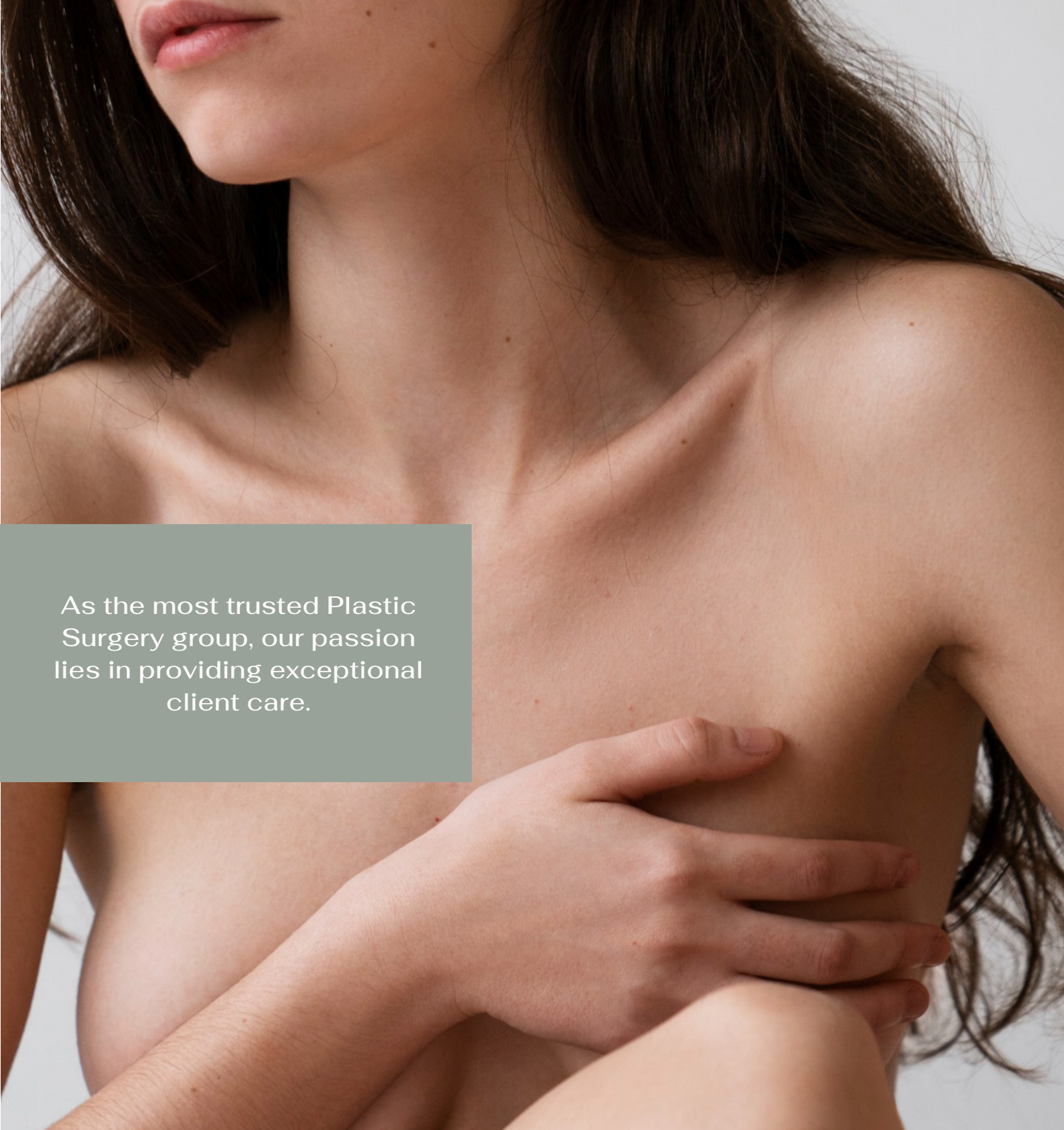


Why Us

Welcome to our trusted agency for international cosmetic and dental procedures. With over a decade of experience, we offer top-notch care from highly skilled surgeons in Phuket. Enjoy peace of mind with transparent pricing, 24/7 support, and flexible payment plans.



- ✓ Original facilitator of International cosmetic and dental procedures
- ✓ Over 10 years of industry experience since 2014
- ✓ Leading and most trusted agency
- ✓ Central offices located in Phuket
- ✓ Highly skilled and reputable Plastic and Reconstructive Surgeons
- ✓ Joint Commission International (JCI) Hospital accreditation
- ✓ Meet your surgeon BEFORE paying for your procedure
- ✓ Escorted group tour packages with Thai hosts
- ✓ Peace of mind with 24/7 support team
- ✓ No hidden fees and costs
- ✓ Medical Travel Cover
- ✓ Payment plans available



As the most trusted Plastic Surgery group, our passion lies in providing exceptional client care.

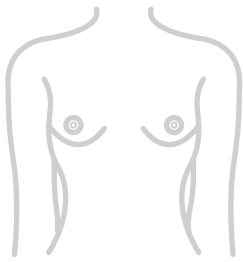


Breast Augmentation

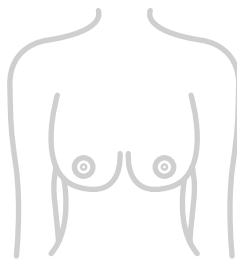
Breast Augmentation, also referred to as Augmentation Mammoplasty, Breast Enhancement, or informally as a "Boob Job," includes various terms that describe the same procedure. This surgery can be performed for both cosmetic and reconstructive purposes, such as after a mastectomy or injury. The procedure involves inserting implants beneath the breast tissue to improve the size and shape of the breasts.

Benefits Of Breast Augmentation

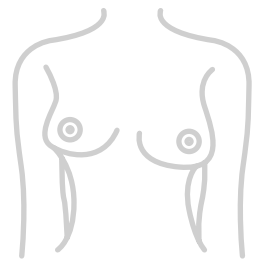
Breast implants can be used to:



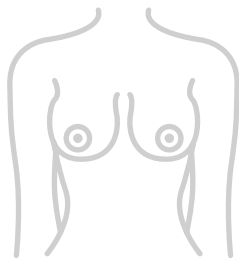
Increase breast size



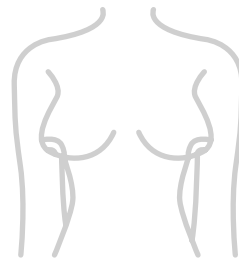
Restore volume



Correct asymmetries



Provide a more rounded shape

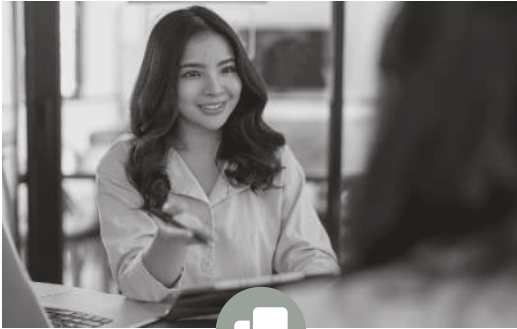


Enhance projection

Breast Augmentation alone cannot correct drooping breasts. If you have significantly sagging or droopy breasts, or if your nipples point downward, your surgeon may recommend combining a Breast Lift with Breast Augmentation for the best results.

The procedure

What To Expect Before Your Procedure.



INITIAL INQUIRY AND ASSESSMENT

Connect with our Client Support Specialists to assess your candidacy and receive personalized surgical advice.



SURGEON CONSULTATION

Meet with your Plastic Surgeon to discuss your desired outcome & together, plan your procedure.



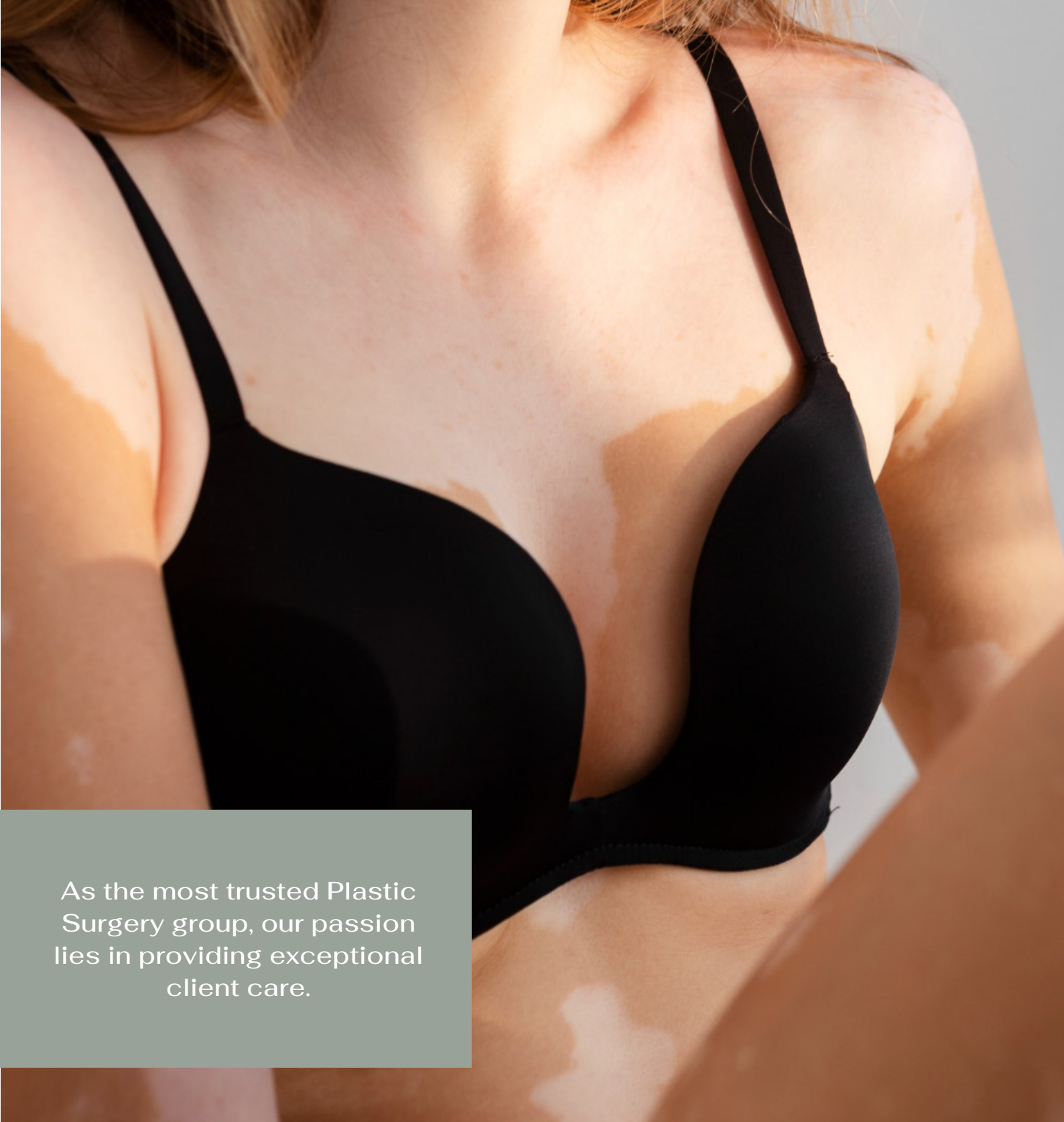
YOUR SURGERY | 2 hours

Breast Augmentation surgery takes between 1 to 2 hours. During which time, clients are placed under general anaesthesia.



AFTER CARE FOLLOW UP

Receive post-operative instructions and follow-up appointments for optimal results.



As the most trusted Plastic Surgery group, our passion lies in providing exceptional client care.

After Your Procedure

After your procedure, recovery times can vary, but we typically recommend allowing 4-6 weeks before returning to work, with full recovery taking 6-12 months. Here's a general guide to what you might expect:

Hospital Stay (1-2 nights):

The duration depends on surgical complexity, post-surgery health, home monitoring availability, and location of the procedure.

Rest Time (2 Weeks):

Implants will initially appear high on the chest and feel tight. Any slight discomfort should subside within a few days.

To aid recovery:

- ✓ Use ice packs and take pain medication as needed.
- ✓ Avoid driving, working, or exercising during the first week.
- ✓ In the second week, clients can gradually begin light, lower body exercise and, in most cases, return to work.
- ✓ Avoid heavy lifting, strenuous exercise, and swimming until your surgeon gives the all-clear.

Recovery Time (6 Weeks):

Wearing post-surgery support garments aids in optimal healing and reduced swelling.

Settling Period (6-12 Months):

The appearance of the implants will change and settle over the next 6 to 9 months.

Planning Your Procedure

The days of breast augmentation solely focusing on increasing breast size are over. Today, there are various types of implants available, making the choice of implant crucial for planning the perfect augmentation.

Our surgeons collaborate with you to create a customized treatment plan tailored to your unique needs and desired outcomes. When designing your procedure, skilled CosMedTour surgeons take into account several physiological factors, beyond just your preferred size.

These factors include:

- Your natural breast tissue and anatomy
- Your body proportions
- Skin thickness
- Skin elasticity

We encourage you to be open and realistic about your desired breast outcomes. It is equally important to consider the surgeon's advice on what will work best for you and your body in the long term.

As the most trusted Plastic Surgery group, our passion lies in providing exceptional client care.



Decisions to Be Made with Your Surgeon

When planning a breast augmentation, there are many considerations. Your surgeon will guide you through the process, but it's also helpful to familiarize yourself with your options.

Implant Type:

All breast implants used by CosMedTour surgeons are cohesive silicone gel, commonly known as 'gummy bear' texture. Many believe cohesive silicone gel implants feel more like natural breasts compared to saline implants.

Implant Size:

Your surgeon will advise on the best implant size for your body, considering not just your current physique but also future changes.

Implant Surface:

Breast implants come with either smooth or micro/nano-textured surfaces. Smooth implants are softer, while textured surfaces reduce the risk of implant movement.

Implant Shape:

- Teardrop (Anatomical) Implants: Designed to mimic the natural shape of the breast, with more fullness at the bottom and less at the top.
- Round Implants: Circular and symmetrical, providing more fullness and volume to the upper part of the breast for a more dramatic effect.

Projection:

Projection refers to how far forward the implant extends from your chest. Higher profiles increase cup size and provide more projection.

Incision Placement:

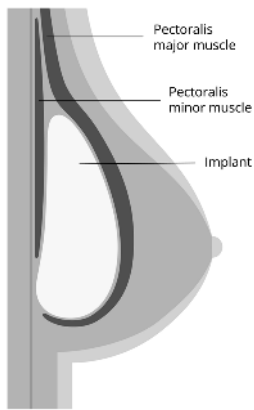
There are three common incision placements for breast augmentation:

- Transaxillary: Incision in the armpit area.
- Periareolar: Incision around the nipple.
- Inframammary: Incision below the breast, in the breast fold.

The inframammary incision is often preferred due to minimal scarring and providing the surgeon with an unobstructed view, allowing for increased precision. Your surgeon will recommend the best incision placement based on your unique anatomy.

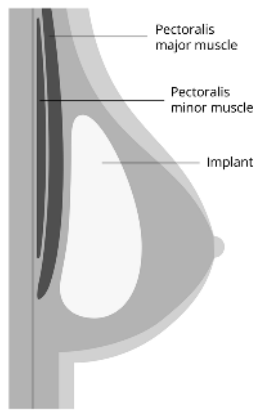
Implant Placement

Breast implant placement is a decision influenced by various factors such as skin quality, body composition, existing breast tissue, lifestyle, and desired outcome. Surgeons typically consider three approaches for implant placement:



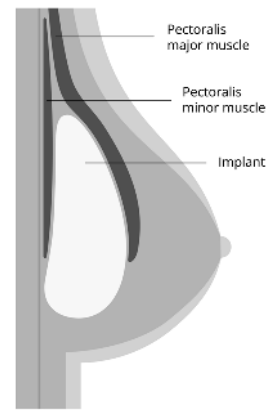
Under Muscle Placement:

The implant is positioned beneath the pectoralis major muscle (the pec), providing an additional layer of coverage over the implant. This placement helps to smooth out any potential ridges between the implant and the skin.



Over Muscle Placement:

The implant is situated between the pectoralis major muscle and the breast tissue. This placement assists in shaping the breast into a more regular form and is typically suitable for clients with a sufficient volume of natural breast tissue.



Dual Plane Placement:

This approach combines both Over and Under Muscle placements. The upper portion of the implant is positioned under the pec, while the lower portion rests above it, underneath the breast tissue.



These techniques offer tailored solutions to meet the unique needs and goals of each patient, providing options for achieving a flatter, firmer abdomen and enhanced body confidence. Your Surgeon will guide you through the selection process, ensuring you choose the most appropriate technique for your individual case.

Potential Risks To Consider

While you can trust that you'll be in expert hands throughout your CosMedTour journey, it's essential to acknowledge the potential risks associated with any surgical procedure. Our dedicated Plastic Surgeons prioritize safety and work in hospitals renowned for their excellence and high standards of practice. Here are some possible risks and complications:

Risks & Possible Complications:

- Surgical risks, including infections, bleeding, clotting, and allergic reactions to medical materials.
- Heart or lung complications.
- Seroma, which is fluid accumulation around the implant, incision site, or inside the breasts.
- Haematoma, a collection of blood inside the breast.
- Changes in skin and/or breast sensitivity.
- Damage to nerves, blood vessels, and muscles, which may be temporary or permanent.
- Pain, discomfort, or numbness around incisions, which may be temporary or permanent.
- Keloid or hypertrophic scarring, which can be lumpy, inflamed, and itchy.
- Wrinkling of the skin over the implant.
- Implant rupture, slippage, or movement.
- Asymmetry of breasts.
- Breastfeeding difficulties.
- Nausea from anesthesia.
- Capsular contracture, where scar tissue forms around the implant, potentially affecting the shape and feel of the breast.
- Lumps in lymph node tissue caused by leaking silicone, which is not a health risk.
- Reduced effectiveness of breast screening, though modern imaging has minimized this concern.
- Skin discoloration or permanent pigmentation changes.
- Fat necrosis resulting in hard lumps in the skin.
- Potential or partial loss of nipple and areola sensation.
- Stiff shoulder or tightened skin preventing forward bending.
- The need for further surgery to address complications.

Your safety and well-being are our top priorities, and our Surgeons will take every precaution to minimize these risks and ensure the best possible outcome for you.

Why Choose Cosmedtour



Compassionate Care:

Our dedicated team ensures you feel confident, safe, and supported at every stage of your journey.



Surgery Payment Options:

From layby to personal loans, we offer assistance with payment options to fund your Plastic Surgery.



The Best Plastic Surgeons:

Work with the finest and most trusted Surgeons who understand your goals and deliver beautiful results.



All-Inclusive Surgery Packages:

Our packages cover everything from surgery, anaesthetist fees, to hospital stay, with no hidden costs.



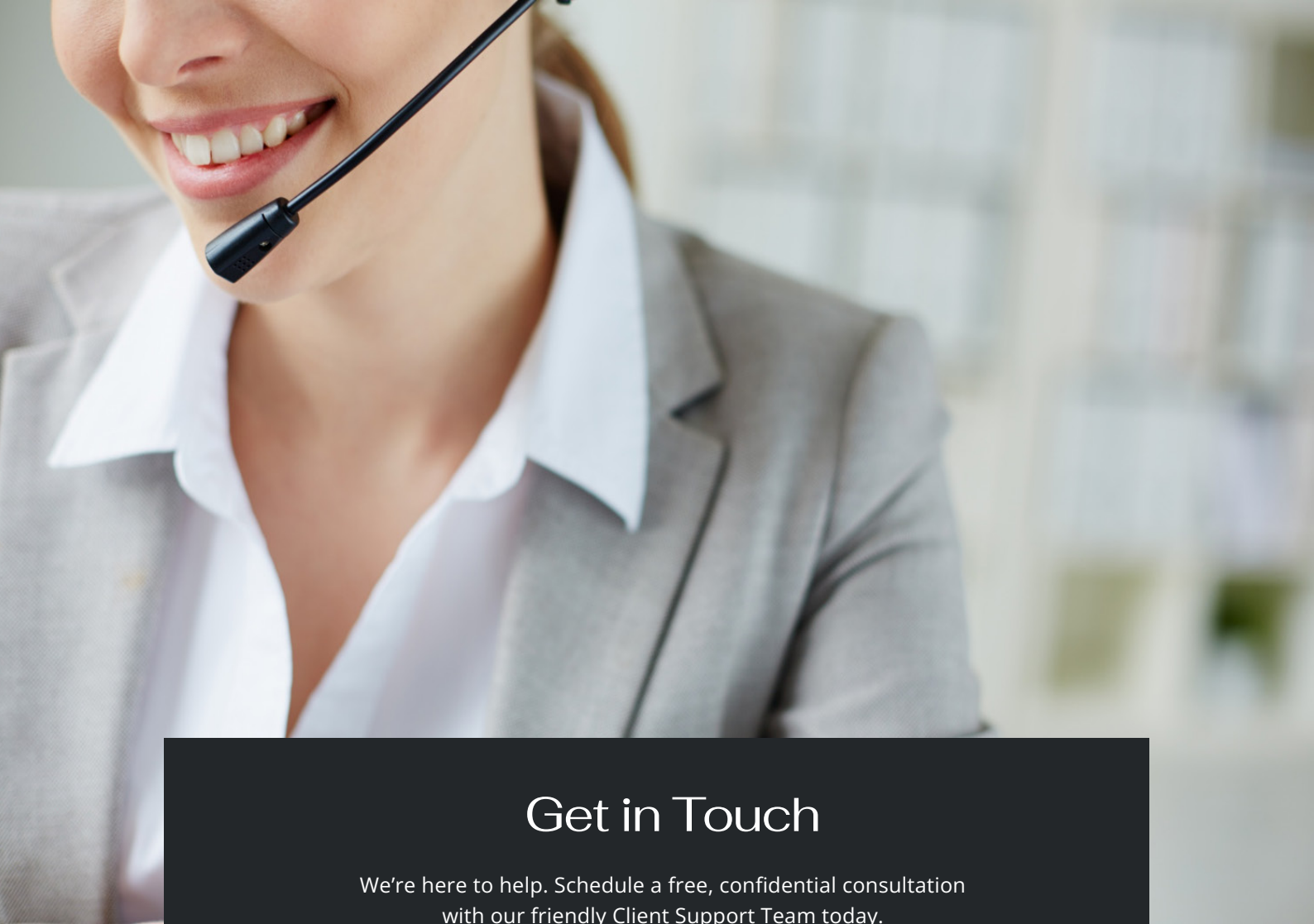
Trusted by Clients:

With 12 years as Australasia's most trusted Plastic Surgery group, we maintain a 5-Star Google rating.



Honest, Personalized Advice:

We believe in authenticity and provide realistic advice about the results you can achieve.



Get in Touch

We're here to help. Schedule a free, confidential consultation with our friendly Client Support Team today.



Phone us on +66 884486718



Send us an [online enquiry](#)



Take advantage of our 5-minute online assessment to receive your personalised, obligation-free quote.

[START NOW](#)

COSMED+
TOUR